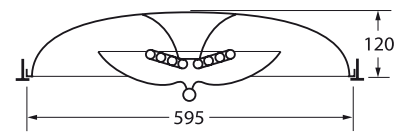
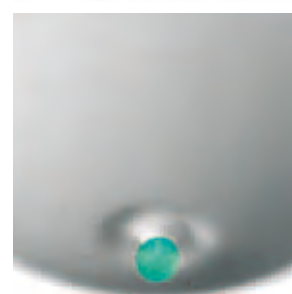
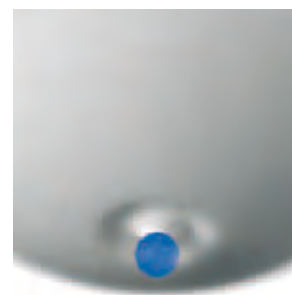
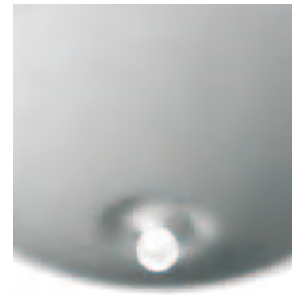
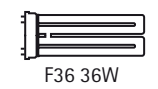




Encastré pour 2 lampes fluo-compactes 36W
Tôle d'acier repoussée et laquée blanc
Bille polycarbonate blanche ou colorée



Fixation
ossature apparente
Té de 15 ou 24 mm



RÉFÉRENCE	DIMENSIONS	SOURCES	WATT (w)	CACHE LAMPES	BALLAST	PHOTOMÉTRIE
GOTA 600-2F36 BE	600 x 600	2	36	Plein	Électronique	55%
GOTA 600-2F36 BG	600 x 600	2	36	Plein	Gradable	55%